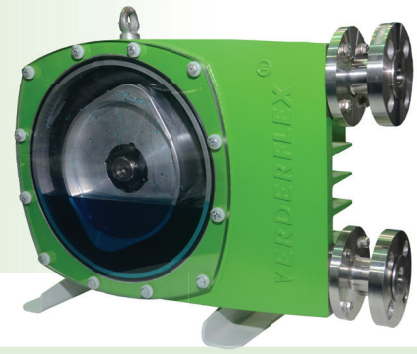
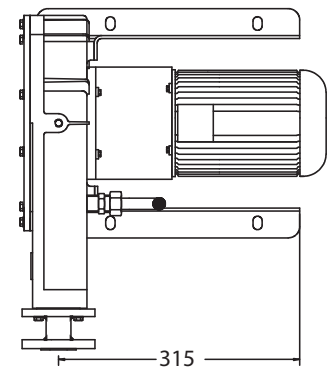
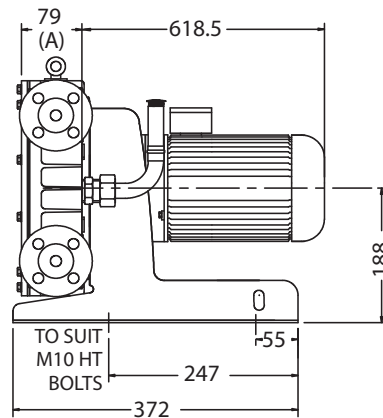
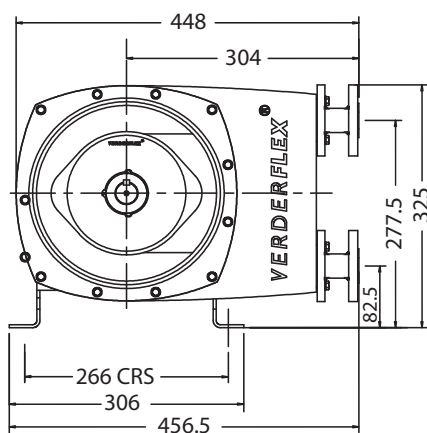


# Verderflex VF15



VERDERFLEX®

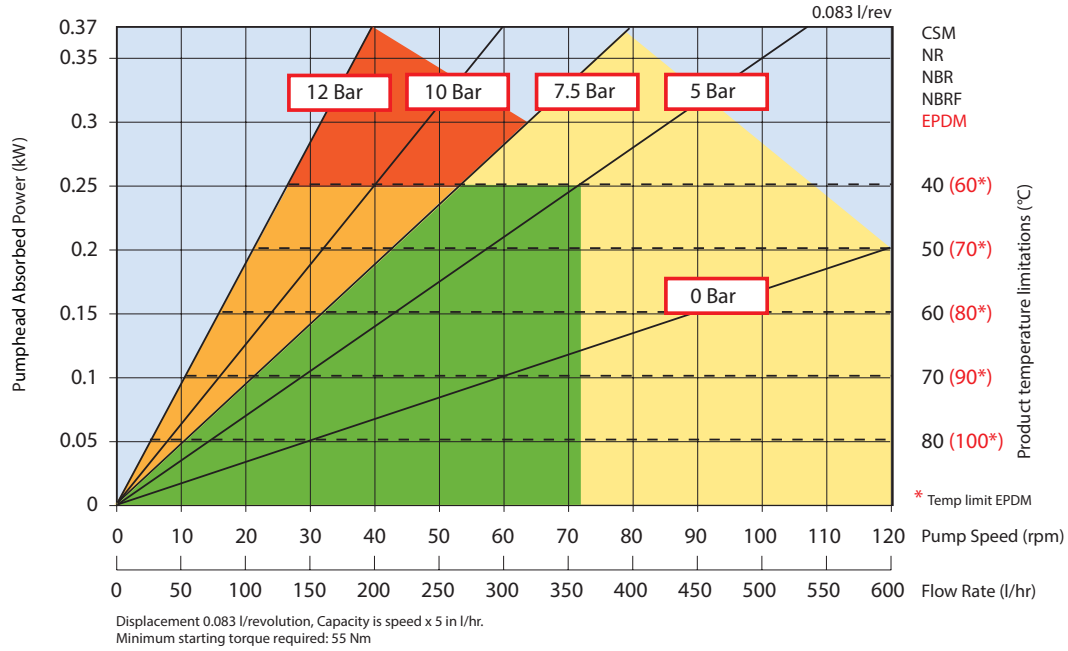
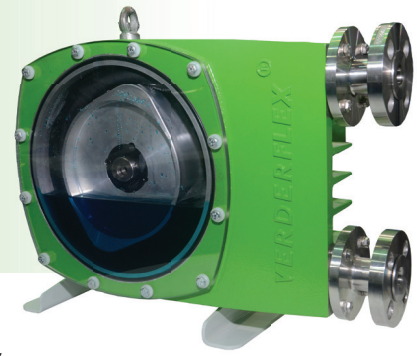
| Description              | Material   | Paint Detail        |
|--------------------------|--|---------------------|
| Pump Housing             | Aluminium (LM25)<br>Option: Cast Iron (GG25)   | Green Powder Coated |
| Front Cover              | Clear Polycarbonate  |                     |
| Rotor                    | Aluminium (BS.1490:1988 LM25M)<br>Option: Cast Iron (ASTM A 536)   |                     |
| Port Flange              | 304 Stainless Steel Universal slotted design fits with<br>DIN PN16, ANSI 150# & JIS10K<br>Plated Carbon Steel to suit hose tail insert<br>316 Hygienic Flanges available on request to special order |                     |
| Inserts                  | Stainless Steel (316L)<br>Options: Polypropylene, P.V.D.F. Inserts and<br>316 Stainless Steel Hose Tail  |                     |
| Mounting Frame           | Carbon Steel   | Powder Coated       |
| Lubricant                | Verderlube - Glycerine based compound<br>Verdersil - Silicone oil  |                     |
| Hose                     | Natural Rubber (NR)<br>Options: Nitrile Buna Rubber (NBR) Ethylene Propylene Diene Mono-<br>mer (EPDM), Food Grade Nitrile Buna (NBRF) and Hypalon® (CSM)  |                     |
| Typical Pump Unit Weight | Aluminium Unit: 34 - 41 kg<br>Cast Iron Unit: 46 - 52 kg   |                     |



All dimensions are in mm.  
All dimensions and weights are for guidance only.



# Verderflex VF15



Continuous use (SP) Standard Pressure Rotor    Intermittent use max. 1 hour running min. 1 hour stopped    Continuous use (HP) High Pressure Rotor    Intermittent use (HP) High Pressure Rotor

Flows are typical and were measured with water at 20°C with no suction lift or discharge pressure. Actual flows will vary according to suction conditions, discharge pressure and normal component production tolerances.

**Find your local supplier  
at [www.verderflex.com](http://www.verderflex.com)**

For construction installation and floor mounting drawings please contact your local authorised Verderflex® distributor.

